



PETROGEAR FZE
OILFIELD EQUIPMENT MANUFACTURING



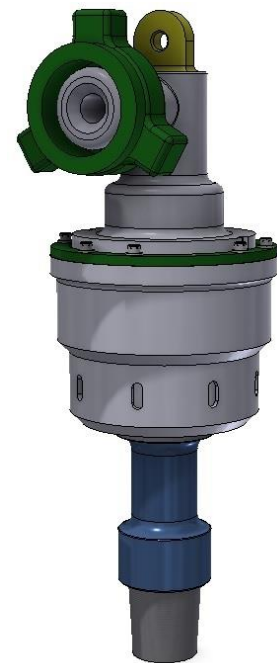
PG-2" ROTARY SWIVEL

PRODUCT OVERVIEW

Petrogear swivels are designed and machined to be durable and easy to maintain onsite and we can custom machine the bottom and side connections to your requirements.

STANDARD FEATURES

- All parts are integral
- AISI Grade 4140 material
- Thread Specification certified to API 7-1
- Magnesium Phosphating done on both connections
- Swivel supplied with pressure test reports
- Swivel supplied with parts list diagram
- Swivel supplied with maintenance assembly manual
- Swivel supplied with full material traceability certificates
- Supplied with a custom made storage case to house the swivel and spares
- Bottom and side thread protection caps
- Lifting padeye is machined from the solid upper block eliminating the requirement for regular load testing and MPI inspections
- Maintenance tools supplied



SPECIFICATIONS

Exterior Dimensions	700mm (L) x Ø 250mm	Max. Pressure Static	10000 PSI
Side Outlet Connection	FIG 1502 H2S Male	Tare Weight	650 Kg
Max. Speed RPM	250 rpm	Course Bore Ø	1-1/4" (31.75mm)
Finish	Electroplated, Nickle hard chrome finish at seal locations, epoxy painted		
Typical Bottom connection (box & pin)	2-3/8" API Reg.	2-3/8" API IF	2-7/8" API Reg. 2-7/8" API IF

PETROGEAR FZE

PO BOX 6329 | RAK FZE TECHNOLOGY PARK | RAS AL KHAIMAH | UNITED ARAB EMIRATES

OFFICE: 072434839 | MOB: 056 361 5711 | FAX: 072435257

www.petrogear.ae | sales@petrogear.ae